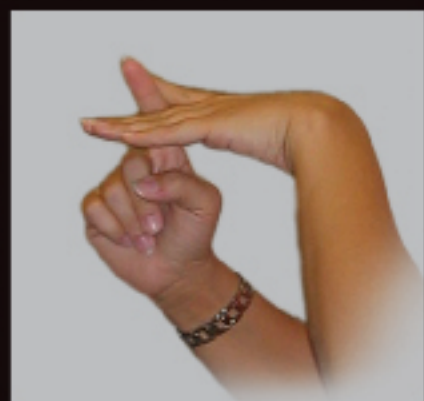


HOME FIRE SAFETY

For People who are
DEAF





Provided by
Fire Safety Solutions for Oklahomans with Disabilities:
A joint project of Oklahoma ABLE Tech & Fire Protection
Publications at Oklahoma State University

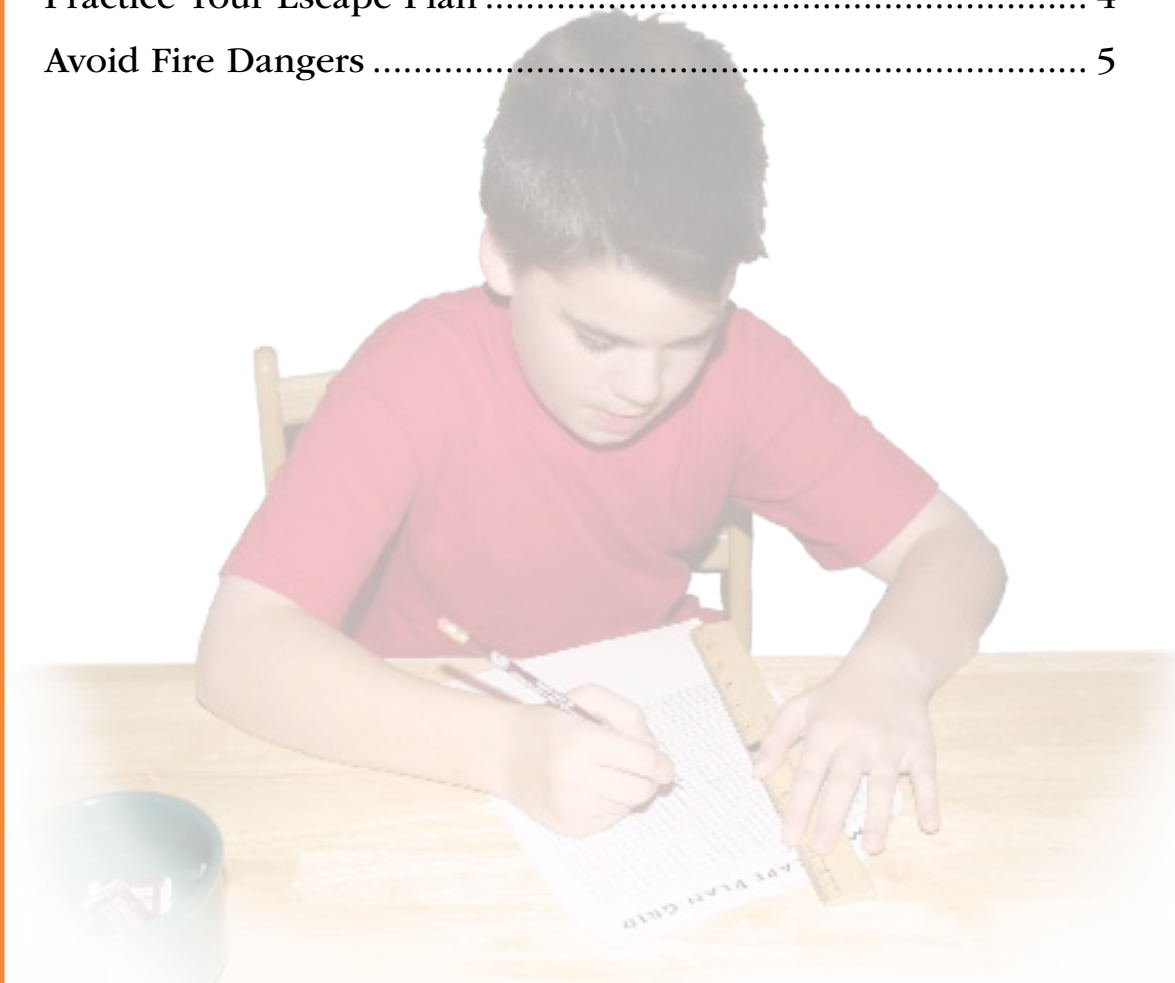
Why Read This Guide?

Research shows that people with disabilities have a higher risk for being injured or killed in a fire. So, this guide will help you:

- Make sure your smoke alarm is working
- Create and practice a home escape plan
- Avoid fire dangers in your home

What is in This Guide?

Install Smoke Alarms	2
Create a Home Escape Plan	3
Practice Your Escape Plan	4
Avoid Fire Dangers	5



Install Smoke Alarms

You need at least one smoke alarm outside every sleeping area and on every level of your home. The most dangerous fires occur when you are sleeping. The smoke alarm should detect the smoke before it reaches your sleeping area and wake you up.



Figure 1: A smoke alarm for people who are deaf.

Test the Alarm Every Month

You need to test your smoke alarm every month. Place a reminder on your calendar on a consistent day. Get in the habit of checking your smoke alarm every month. Unless your alarm has a working battery, it won't work, and it won't save your life.

To test the alarm, unfold a paperclip, making it straight. Locate the hole, on the alarm, next to the green light. Push the end of the paperclip into the hole until it touches the bottom of the hole. Then, push the bottom until the red light blinks and the alarm beeps. Also look to make sure the strobe light is flashing and the bed shaker is moving.

Consider marking your calendar or your text messenger (such as Sidekick) to alert you to the monthly testing schedule.

Change the Battery

The battery should last 10 years. But if the red light on the alarm begins to blink or the alarm chirps, and there is no fire, then change the battery.

Change the Alarm Every 10 Years

Smoke alarms are good for 10 years. After 10 years, you must buy and install a new smoke alarm. Place a label on the alarm. Write the date the alarm was installed on the label. Make sure the label does not cover any vents on the smoke alarm.

Know Your Smoke Alarm

Your smoke alarm has three parts. The parts work together. The three parts are a smoke alarm, a bed shaker, and a strobe light. The smoke alarm is outside your sleeping area. It detects the smoke. It sends a signal to the strobe light and the bed shaker. The strobe light flashes, and the bed shaker moves to wake you up.

If you have multiple sleeping areas, all of the alarms use the same signal. If any of the alarms detects smoke, then all of the strobe lights will flash, and all of the bed shakers will move.

Danger! The strobe light must be next to your bed. The strobe light will not wake you up if it is not close to your bed.

Consider a Fire Sprinkler System

Home fire sprinkler systems give you

the best level of safety. The system triggers quickly and puts out the fire before it can spread. Also, the system puts out the fire before anyone in the home can be affected by inhaling toxic smoke, which is the number one cause of deaths in a fire.

For more information, go to www.homefiresprinkler.org or call 1-888-635-7222.

Create a Home Escape Plan

What is a Home Escape Plan?

A home escape plan is your way out of your home if you have a fire. After you plan your escape, all family members should practice the escape plan every six months. The more you practice your escape plan, the more prepared you will be to take action in an emergency.



Figure 2: A family makes a home escape plan.

How Do I Create a Home Escape Plan?

1. Draw a floor plan of your home on a large sheet of paper or use grid paper.

2. Check to make sure you have included every door and window that you can use as an exit.
3. Draw all outdoor features or possible obstacles that might keep you from escaping through windows and doors.
4. Draw arrows in red to show the best way out of each room.
5. Draw arrows in blue to show the second way out of each room.
6. Choose a meeting place in front of your home and mark it on the escape plan.
7. Practice the escape plan using the best way out of your sleeping area.
8. Practice the second way out of your sleeping area.

Note: Know both ways out, so you can escape. Make sure that everyone in your family can follow both ways out.

9. Arrange to call 911 or your local emergency number from a neighbor's house.
10. Update the plan as needed.

What Other Things Should I Do?

1. **Include your children in your escape plan.** Make sure you and your children know how to get out.
2. **Clear all escape routes.** Remove all items from halls, any doors and windows, and sleeping areas.

3. **Make sure that your house number is clearly visible from the street.** Consider painting your house number on the street curb.

If you live in an apartment, your landlord should ensure the apartment number is visible from the parking lot and that all building numbers are visible from a distance.

4. **Practice the escape plan every six months.** Include your children. Make certain all family members know how to get out.
5. **GET OUT AND STAY OUT.** Never go back in your home for any reason—not for pets, medication, or anything.

Practice Your Escape Plan

You and your family must practice your escape plan before the emergency. Once the alarm flashes, shakes and sounds, you only have a few minutes to escape, so you must be prepared. The more you plan and practice, the more prepared you will be in an emergency.

Find Two Exits from Each Room

Know all doors and windows that lead to the outside. Make sure all family members, even children, can open them easily. If you have any security bars on the windows, make sure they have an emergency release and everyone can open the bars quickly.

If you have a multi-level home, consider sleeping on the ground level. Get an escape ladder for bedrooms on

the second floor. Make sure that the ladder fits the window.

Choose a Meeting Place Outside

Choose a meeting place in front of your home.

Practice Your Escape Plan

Practice your escape plan regularly. For sleeping areas on the second floor, practice setting up the ladder. But do not climb down the ladder. Climb down the ladder only in emergency situations.

If you have a service animal, practice your escape plan with your animal. Train your animal how to respond to the alarm when you test it every month. However, because you test it every month, your animal may become accustomed to the sound. So, it is important for the animal to realize that the alarm means danger and the animal should alert you.

You should also practice your escape plan without your service animal. If the animal is trapped inside your home, tell the firefighters when they arrive.

In a Fire

Escape must be immediate. Do not wait to be rescued. If there are closed doors between you and the exit to the outside (such as a closed bedroom door), you should feel the door or the doorknob with the back of your hand for heat (see Figure 3). If it is hot, do not open it. Use your second way out.



Figure 3: Feel the door with the back of your hand.

If the door does not feel hot, open it with caution. There still may be smoke and heat on the other side. If you open the door and find smoke or heat, close the door, and use your second way out. If the path to the outside is clear of smoke, or if you can crawl under the smoke, move quickly to the exit (see Figure 4).



Figure 4: Practice crawling to get under smoke.

If you are trapped, call 911 or your local emergency number, and tell them where you are in your home.

Modify Your Plans

You are the expert on your own abilities and needs. You must plan how to give instructions to emergency responders when they come. Instructions should be quick and to the point. You will only have time to relay the most important information.

Call the fire department using a non-emergency number before an emergency. They may be able to store information about your needs. For example, you can tell them that your house has one person who is deaf in the back bedroom on the first floor.

Remember that you will contact 911 or your local emergency number from a neighbor's house. Practice communicating with your neighbors about an emergency. Include this step when you practice your escape plan.

Avoid Fire Dangers

Prepare to Cook

- If you are sleepy do not cook.
- If you feel the effects of alcohol, medication, or other drugs, do not cook.
- Do not wear loose-fitting clothes when you cook.
- Roll your sleeves over your elbows when you cook.
- Keep all items that can burn away from the stove.
- Do not hang a towel on the oven handle.

While You Cook

- When cooking, never leave your stove.
- If you leave the stove, even for a short time, turn off the stove.
- Keep children and pets away. Create a three foot safe-zone around the stove.
- Always use a pan with a lid that fits properly.
- Keep a lid nearby to smother any flames.
- Keep handles of the pans turned in.
- Use a timer to remind you when your food is ready. As soon as the timer goes off, turn off the stove.
- Keep the area around your stove clean.
- Do not allow grease to build up around the stove. Built-up grease can catch on fire.

If There is a Fire

- If a pan of food catches on fire, put the lid on top of the pan. Take the pan off the burner.
- **Danger!** Never use water to put out a grease fire.

Microwave

- In a microwave, only cook food—no metal, no clothes.
- Only use microwave-safe containers. Microwaves can melt some plastic containers or cause some ceramic and glass containers to break.

- Microwaves heat unevenly, and your food will continue to cook even after the microwave stops. Open all containers carefully to avoid steam burns.
- Make sure that the door to the microwave always seals properly. Do not use the microwave if the door does not close.
- If you have a fire in the microwave, do not open the door. Turn the microwave off. Call 911 or your local emergency number. Before you use the microwave again, have it serviced to make sure it works properly.

Smoking

- If you smoke, you and your family are at greater risk for fire, burns, and death. Smoking is the number one cause of deadly fires.
- Never smoke in bed. If a cigarette fire starts in your bed, you are too close to the fire and may not be able to escape.
- Never leave a lit cigarette. Put it out.
- Do not smoke when drinking alcohol or taking prescription medication that makes you drowsy.
- Do not smoke in carpeted areas.
- Do not smoke in upholstered chairs. Smoke at a table. Do not use a tablecloth. Keep flammable items (such as napkins) away.
- Keep the smoking area free of clutter.
- Keep lighters and matches where children cannot get them.

- Always use ashtrays that are deep and will not tip over.
- Only use ashtrays to dispose of cigarettes. Do not put trash in them.
- Do not overfill ashtrays.
- Before you dump cigarette butts in a trash can, pour water on the butts.
- Never smoke in areas where oxygen is being used.

Candles

- Trim candle wicks to 1/4 of an inch before you light them.
- Always put candles on a holder that will not burn. Move them away from things that can burn (curtains, furniture).
- Put candles in sturdy holders that are big enough to collect wax and will not tip over.
- Keep candles at least 4 inches apart.
- Make sure that children or pets cannot reach candles or knock them over.
- No burning candle is safe. Never leave candles unattended. Even jar candles are unsafe because the jar can break and the wick can ignite other materials.
- Blow out candles when you leave a room.
- Do not use candles in your bedroom. You may fall asleep and forget about them. About half of all home fires that involve candles start in the bedroom.
- If the electricity goes out, always use a flashlight, not a candle.

Electrical Appliances

- Immediately unplug any appliances that spark, smell unusual, or overheat. Replace them or have them professionally repaired.
- When an electrical cord frays or cracks, replace it.
- Do not put electrical cords or wires under rugs.
- Make sure that lamps and night lights do not touch any fabrics or furniture.
- If you use an extension cord, unroll it all the way to keep it from retaining heat. Do not leave it coiled in any way.
- If you have young children in your home, cover the unused outlets with plastic covers.
- Do not overload outlets.
- Make sure that you place plugs in the proper type of outlet.
- Polarized plugs (one prong is wider than the other) require polarized outlets.
- Three-prong plugs require outlets with three holes to properly ground the plug.
- Never force a plug into an outlet when it will not fit.
- If a fuse blows or trips a circuit, do not just replace it. Find out what is overloading the system, and correct the problem.

Fireplaces

- Keep anything that can burn at least 3 feet away from heat sources.
- Do not wear loose-fitting clothes near open flames.
- Use old, dry wood in your fireplace. New or wet wood is more dangerous.
- Use a fire screen.
- Every year before winter, look at your chimney for cracks.
- Once a year, have a professional clean your fireplace.

Space Heaters

- Space heaters are a fire risk.
- Use only space heaters with a UL label.
- Make sure that your space heater has an automatic switch to turn it off if it falls over.
- Move the space heater 3 feet away from everything (walls, furniture, clothes).
- Use the space heater for short periods of time.
- Do not go to bed with the space heater on.
- Always unplug your space heater when not in use.

Remember!

1. You are the expert on your abilities and needs. If you know what to do in a fire, you can lower your risk.
2. Install a smoke alarm in your home. Test it every month. Change it every 10 years.
3. Practice your escape plan every six months. Make changes as needed. Put it where you can see it.
4. Be safe around the house. Avoid home fire dangers.

Fire Safety Solutions for Oklahomans with Disabilities
is funded by the Department of Homeland Security
and the United States Fire Administration
Fire Prevention and Safety
Assistance to Firefighters Grant

For More Information

Oklahoma ABLE Tech 1-888-885-5588 (V/TDD)
or 405-744-9748 <http://okabletech.okstate.edu>

Fire Protection Publications 1-800-654-4055
<http://www.ifsta.org>



Located at Oklahoma State University